



MCe Performance

PORTFOLIO

2025



LISTEN. PLAN. EXECUTE.

1. **Listen** to what the audiences and stakeholders are saying, identify their drivers, and determine what the market trends are signaling.
2. **Plan** a business/marketing strategy that addresses what we heard from the audiences, stakeholders, and markets. Include a discussion about the competitive landscape.
3. **Execute** on the messaging and brand by providing decisive and creative guidance that develops brands and marketing assets that are distinctive, memorable, and transform cultures.

INTRODUCTION



WE'RE IN BUSINESS TO

SERVICE ROTATING EQUIPMENT

Energy Link is a trusted authority for diagnosing and resolving rotating equipment issues.

If you are moving fluids or gasses in your operations, we are skilled at fabricating, optimizing, and maintaining your pumps, generators, compressors, or engines.

[Read more](#) →





WELCOME TO DELTA PUMP SYSTEMS

Where engineering and service meet.™

Delta Pump has been moving fluids with high-performance pumps for over 33 years.

INDUSTRIES SERVED

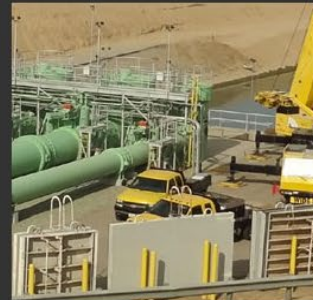
OUR CHANNEL PARTNERS

Oil & Gas

Upstream | Midstream | Downstream



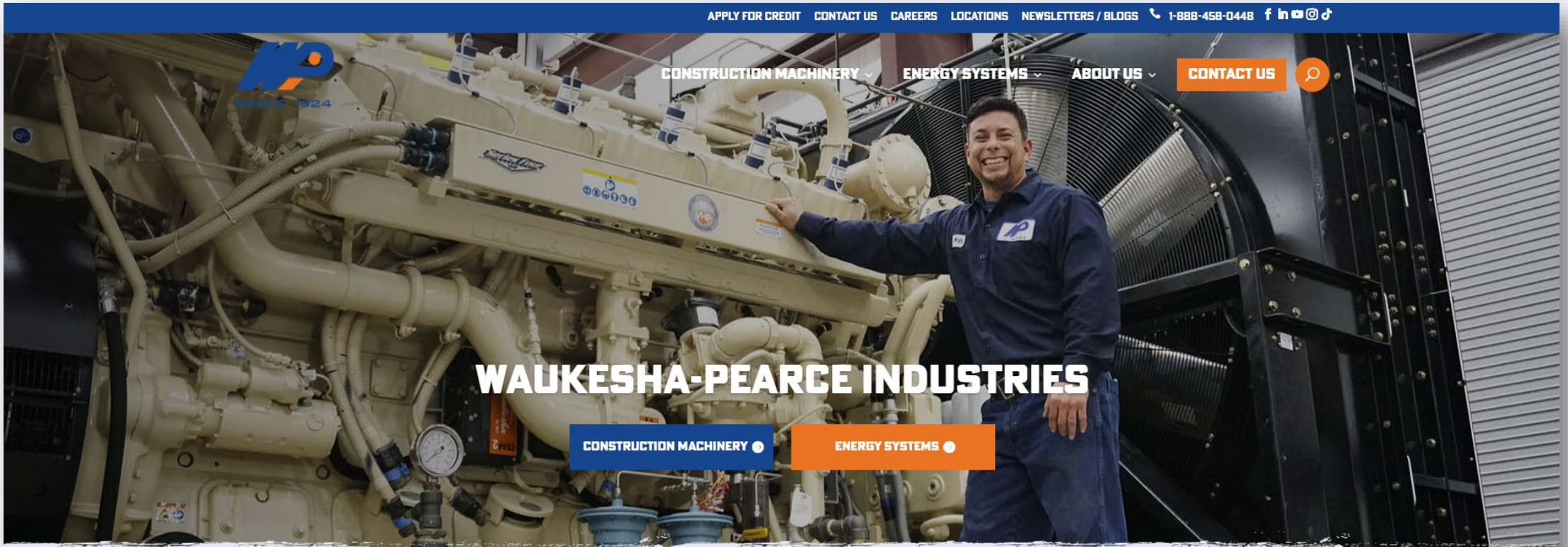
Water Districts



PUMP SATISFACTION

We have a stellar reputation in each of the industries we serve for our professional approach, engineering expertise, and service reliability.

From the conceptual solution to final execution, we are committed to teaming with our clients to develop the best hydraulic solution that fits their specific needs.



THE PEOPLE. THE PARTS. THE EQUIPMENT. TO KEEP YOU MOVING!

CONSTRUCTION MACHINERY

Welcome to WPI Construction Machinery Division. We are proud that



UsedOilfieldEquipment.energy

WEBSITES



[Buy](#) [Sell](#) [Need](#) [Contact](#)

BUY NOW

Browse our inventory

SELL NOW

Sell your used equipment

At Energy Link, our goal is to alleviate the stress of selling used and



WHO WE ARE | CLUSTER DYNAMICS | HYDROGEN | HAVE YOU HEARD | CONTACT

Energy Link Industrial Services is responding to requests for Information regarding hydrogen production, sourcing, storage, and fueling for bus fleets.



Many bus and transportation operator's have aspirations for forward-looking goals regarding fueling their bus fleets. Energy Link has formed a cluster business model— an ecosystem of specialized organizations co-located in the same sector and focused on complementary offerings. Each collaborator service offering that addresses all facets of hydrogen infrastructure.

LANDING PAGES

LODESTAR
Turbine Parts Management

FREE Presentation
Sign up to learn the benefits of our LODESTAR turbine parts management service.

First Name:

Last Name:

Email:

Request Your Free Presentation

1993 For Owners and Operators who manage gas turbines, we make the most of yours.

Predictive Maintenance Software Designed for Complete Life & Output Tracking of Gas Turbines Parts

Lodestar uses state-of-the-art sensors, surveillance of turbine and calculation of remaining useful life to give you better insight into turbine health.

TURBINE TECHNOLOGY
Vintage Gas Turbines

Cost-Benefit Review for Vintage Gas Turbine Modernization

The modernization of vintage gas turbines to meet the new market demands has plenty of upside for operators.

There is a lot of upside to modernization projects. In the utility sector, modernization helps to reduce fuel cost, improve efficiency, reduce emissions, and extend the life of the turbine. In the industrial sector, modernization helps to reduce maintenance and improve reliability. It also improves the overall performance of the turbine, which can lead to higher output and lower costs.

Cost-Benefit Review:
Turbine modernization projects provide a lot of upside for operators. They can help to reduce fuel costs, improve efficiency, and extend the life of the turbine. They can also help to reduce maintenance and improve reliability. Modernization projects can also help to improve the overall performance of the turbine, which can lead to higher output and lower costs.

50% INCREASE IN VENTURE CAPITAL FUNDING FOR VINTAGE GAS TURBINES

80% OF VINTAGE GAS TURBINES ARE NOW OPERATING AT FULL CAPACITY

- Operating Reliability
- Energy System Improvement
- Reduced Fuel Costs
- Lower Emissions
- Lower O&M Costs
- Increased Output
- Lower Emissions
- Lower O&M Costs
- Increased Output

TURBINE TECHNOLOGY
Vintage Gas Turbines

Flexibility Enhancements for Gas Turbines

FAST START PROGRAM
Stabilizing the Grid Has Its Challenges

The future of power production is changing. The business of power production is changing. To be successful in the future, all stakeholders in the power industry must work together to address the challenges of a changing energy landscape.

Download Our FREE Presentation
Discover how FAST START can help you meet the challenges of a changing energy landscape.

Name:

Email:

Get Your FREE Presentation Today!

The business of power production is changing. To be successful in the future, all stakeholders in the power industry must work together to address the challenges of a changing energy landscape.

TTS
Global EPC Partnership

27MM kW and Counting

Our EPC Partnership provides the best of both worlds: the expertise of our turbine manufacturers and the expertise of our EPC partners.

Key Features:

- 27MM kW and Counting
- 100% On-Time Delivery
- 100% On-Budget
- 100% On-Schedule
- 100% On-Site
- 100% On-Site
- 100% On-Site

Key Features:

- 27MM kW and Counting
- 100% On-Time Delivery
- 100% On-Budget
- 100% On-Schedule
- 100% On-Site
- 100% On-Site
- 100% On-Site

WPI
Power Generation Services

NOT JUST A VENDOR. A PARTNER.
Tailored Power, Compression, and Support—Engineered for Your Operation.

At WPI, we don't believe in one-size-fits-all. For over 100 years, we've helped operators like you produce power, produce and control with energy and fuel services that fit your needs, not just our own.

What's in it for you?

WPI Advantage	What it Means for You
Custom Built Power & Compression Systems	Engineered solutions designed to meet your specific needs
Direct Access to Experts	You talk to the people who built it, not a middle man
Field & Shop Service That Shows Up	Local teams with deep product knowledge and fast response
Complete Support for Every Part of Your Process	From design to service, with our people, reliability, and integrity
Build to Suit and Performance Systems	Your specs, our reliability—without the red tape

Louis Pearce, IV, Co-CEO, Engine Division
The best way to know is to see for yourself.

BUILD-TO-SUIT POWERGEN
We specialize in manufacturing power plant solutions customized to your needs. Whether you require permanent, temporary, or bridging power, WPI offers flexible solutions for reliable electricity.

TTSLodestar.com
VintageTurbineReliability.com
TTSFastStart.com
EPCGlobalPartner.com
wpi.com/energy/
PracticalPowerResilience.com

Daniel Bartram
Director of Power Generation
Waukesha Power Industries

Operating in the black...
This is a great idea for your financials but not so much for your business operations if the grid fails.

Demand Response Flexibility is a Practical Solution for Power Resilience.

The stability of the weather and the consistency of renewable energies have brought real challenges to energy systems.

- DR Avoids Interruptions**
- DR Cost Study**
- DR Line Points**

Houston Poly Invests in Power Resilience

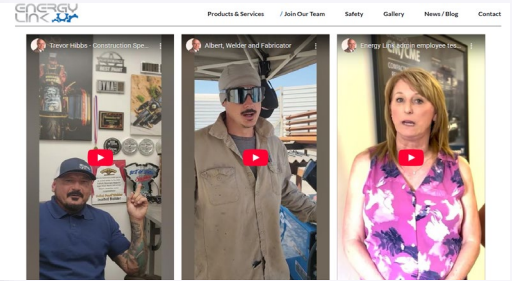
DR line points

Web pages dedicated to specialty products and services.

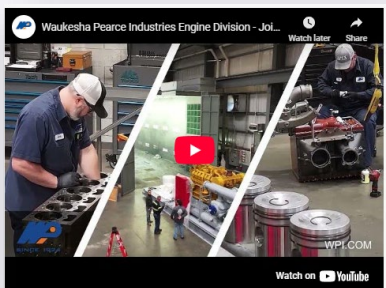
VIDEOS



<https://youtu.be/0d85N3n3KMc>



<https://youtu.be/1lp57xOJI8Q>





BRANDING

Corporate and Trademarked Sub-Brands
Infographics
Messaging/Taglines



ADVERTISING

Commissioning and Balance of Plant Controls

Not everybody is getting your hands on and making what happens. It's about the data.

With 100+ years of plant process generation, we bring you the best. These solutions are not only available to the BPO, but also to the plant.

EPC Global Partner

Technical expertise

www.mpi.com

This summer, when it's hot outside, make more MW.

Increase Your Gas Turbine Output and Efficiency with Adjustable Peak Firing

Go to page 45 in the OCT edition for a detailed case study.

www.turbolack.com

Natural Gas Doesn't Move Itself. That's Where We Come In.

From extraction and gathering to compression, power generation, and fuel delivery, WPI is the engine behind North America's natural gas infrastructure. Now, for the first time, we've merged it all into one place for you to see.

Explore WPI's full capabilities in a dynamic new format. Our Natural Gas Infrastructure Map shows how we deliver the systems, services, and support that keep the energy economy moving.

See the full story below.

Legacy of Excellence

Waukesha Pearse Industries (WPI) is a provider of equipment and services for the energy, oil and gas, construction, and mining industries. The president-led company is known for its longstanding presence, commitment to quality, and expertise in solving unique requirements.

Since 1924
What to expect for the next 100 Years

www.wpi.com

START UP WITH IT'S

WPI's innovative cluster approach in response to SacRT's hydrogen RFI

www.wpi.com

**Trade Publications
Press Releases
Internal Communications
Email Marketing
LinkedIn Advertising
Blogs/Articles**

WAUKESHA - PEARCE INDUSTRIES
A Legacy of Excellence.

Quality Assured...

At WPI, we are committed to delivering exceptional quality and service when manufacturing industrial engines. We are also dedicated to pushing the boundaries of innovation and growth in the manufacturing industry. This commitment to staying ahead of the curve is what sets us apart. Our remanufactured engines and components come with a warranty equal to that of a brand-new engine, giving our customers peace of mind and confidence in our products.

Customer-Centric...

WPI's Pearse Power Solutions brand specializes in providing innovative aftermarket parts and components to meet our customers' needs. We offer parts made to original equipment specifications and manufactured by OEM manufacturers. This includes custom fits, alternate engine and materials, state-of-the-art packaging and a year warranty. This focus is on providing parts for CAT® 3300, 3400, and 3500 series engines.

Growth comes Naturally...

Memorial Machine is an industry leader in manufacturing and rebuilding engine components. Memorial Machine allows WPI to be more vertically integrated and provide better support to our valued customers' and Pearse Electric, WPI's President, Energy Systems, Memorial Machine's 50 years of experience in rebuilding Natural Gas and Diesel engine components, combined with WPI's resources and fleet, gives us a path to continue our mission to provide the best customer service in the industry." said Rex E. Crumpton, Memorial Machine.

Then & Now

Louise Pearce Sr. was committed to finding the best ways to care for his customers' needs and with their loyalty and respect in the process. One hundred years later, that vision has become today's WPI. Four generations have upheld that commitment and are preparing for the future - WPI's next 100 years.

WPI has become a symbol of trust and competence in the markets it serves. WPI's success lies in its commitment to quality, innovation, customers, and their employees. "We are hands-on people. We put a very high value on our employees. They are the company. The people are at the core of what we do, and without their skills and knowledge, we wouldn't be a company, we wouldn't exist." Louis Pearce, III, WPI President. The company profoundly understands the intricate needs of the industries it serves and provides the skills to deliver tailored solutions to address the evolving challenges.

The company has a history of adapting and thriving in an ever-changing business environment, and it continues to do so as it enters its next century of operations. WPI has always upheld its core values of integrity, innovation, and a client-centric approach, and it strives to surpass the expectations of its valued customers.

Several pivotal moments and milestones have profoundly influenced WPI's current market position, including:

- 1923: Louis M. Pearce, Sr. founded the Portable Rig Company
- 1933: WPI introduces diesel and gas engines to the oil and gas industry, replacing steam engines on drilling rigs and creating a safer work environment.

NEWS RELEASE

FOR IMMEDIATE RELEASE

Waukesha - Pearce Industries, LLC
04/09/2024

Waukesha - Pearce Industries Marks a Century of Excellence in Service and Industrial Expertise.

Houston, April 2024 – Waukesha Pearce Industries (WPI), a company that provides services to the energy, oil and gas, construction, and mining industries, is proud to announce its 100th anniversary. Over the past century, the company has maintained its excellence, quality, and customer satisfaction legacy.

The year was 1924. The place was Southeast Texas, the heart of Texas oil and gas industry. He was innovative in finding the best ways to care for his customers' needs and win their loyalty and respect in the process. One hundred years later, that vision has become today's WPI. Four generations have upheld that commitment and are preparing for the future - WPI's next 100 years.

WPI has become a symbol of trust and competence in the markets it serves. WPI's success lies in its commitment to quality, innovation, customers, and their employees. "We are hands-on people. We put a very high value on our employees. They are the company. The people are at the core of what we do, and without their skills and knowledge, we wouldn't be a company, we wouldn't exist." Louis Pearce, III, WPI President. The company profoundly understands the intricate needs of the industries it serves and provides the skills to deliver tailored solutions to address the evolving challenges.

The company has a history of adapting and thriving in an ever-changing business environment, and it continues to do so as it enters its next century of operations. WPI has always upheld its core values of integrity, innovation, and a client-centric approach, and it strives to surpass the expectations of its valued customers.

Several pivotal moments and milestones have profoundly influenced WPI's current market position, including:

- 1923: Louis M. Pearce, Sr. founded the Portable Rig Company
- 1933: WPI introduces diesel and gas engines to the oil and gas industry, replacing steam engines on drilling rigs and creating a safer work environment.

FOR IMMEDIATE RELEASE

Energy Link Unveils Innovative Cluster Approach in Response to SacRT's Hydrogen RFI

Bakersfield, CA - 02/10/2025 - Energy Link Industrial Services is proud to announce its formal response to Sacramento Regional Transit's (SacRT) Request for Information regarding hydrogen production, sourcing, storage, and fueling for its bus fleet.

In alignment with SacRT's forward-looking goals, Energy Link has established a groundbreaking cluster business model—a dynamic ecosystem of specialized organizations co-located in the same sector and focused on delivering complementary offerings. This collaborative approach ensures a unified, highly capable service offering that addresses every facet of hydrogen infrastructure, from initial design and feasibility to steady-state operations and future expansions.

A Unified, End-to-End Solution

As the cluster leader, Energy Link, a California-based corporation, coordinates these complementary services, managing technical efforts and stakeholder expectations while aligning project objectives with the highest safety, reliability, and fiscal responsibility standards. This integrated approach positions Energy Link and its partners to deliver a comprehensive hydrogen infrastructure solution supporting SacRT's transition to a sustainable, high-performing bus fleet.

Cluster Collaboration for a Complete Hydrogen Ecosystem

Energy Link's innovative cluster is composed of leading industry partners, each contributing unique expertise to the project:

- Arriel Corporation** specializes in durable reciprocating compressors for the hydrogen ecosystem, offering reliable high-pressure compression tailored to SacRT's needs.
- RPT Alliance** excels in engineering, procurement, and construction management for complex infrastructure projects, particularly in heavy-haul refueling design and construction, ensuring efficient execution.
- WPI** (Waukesha Pearce Industries) provides smart and resilient power plant solutions, delivering plug-and-play standby-prime power to ensure uninterrupted hydrogen fueling operations.
- TTS Energy Systems** provides comprehensive technical support, modular design, and cabinet assembly services to guarantee the optimal performance of all hydrogen system components.

"Our approach embodies the spirit of innovation and collaboration required to build a resilient hydrogen ecosystem," said Energy Link President Ray Miles. "We don't make the hydrogen. We build and service the equipment that moves it."

For over 100 years, WPI has been showing up to help you when it matters.

Since 1924
What to expect for the next 100 Years

Operating in the black?

This is a great idea for your financials but not so much for your business operations if the grid fails. Shine a Light on Demand Response and Self-Reliance.

PracticalPowerResilience.com

LinkedIn Posts and Advertising

For more than 100 years, WPI has been dedicated to assisting you when it matters the most. Our commitment to providing top-notch equipment and support has stood the test of time, making us the reliable choice for all your needs. Trust WPI to be there for you when you need us most.

Cornerstones of Compression Publication

TRADE SHOW

TTSEnergyServices.com
TTSMidstream.com
TTSPowerGen.com

TTS
ENERGY SERVICES

Stands by you™

Leading high-value engineering expertise to improve unit reliability and performance. Our focus on economic operational results ensures your success.

PowerGen
Midstream

Daniel Harris

TTS
ENERGY SERVICES

8'X10'

PRESENTATIONS



**Internal
Corporate
M&A
Product/Service**



PHOTOGRAPHY



PHOTOGRAPHY



PHOTOGRAPHY



An industrial facility featuring a prominent tall, cylindrical chimney with a metal walkway at the top. The scene is filled with a complex network of pipes, including several large blue pipes in the foreground and various grey and white pipes throughout the structure. A large, multi-story metal framework is visible on the right side. The sky is overcast and grey.

MCE Performance

PORTFOLIO

2025